



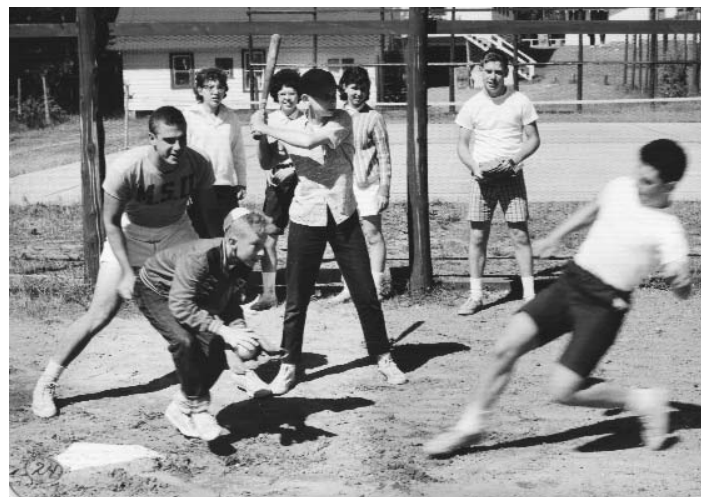
Historic Context

For over six decades, Camp Ramah in Wisconsin has inspired thousands of children to embrace Judaism and deepen their sense of connection and commitment to their Jewish heritage.

Ramah Wisconsin combines the joy of camping with the best of Jewish life. Jewish values and observance are woven into a high-quality summer camp experience in which campers move seamlessly from athletics, hiking, arts, music, and drama activities to prayer services, Hebrew instruction, and text study. Campers develop strong ties to Israel through innovative programming and friendships with Israeli staff. Camp-wide events such as music and dance festivals, dramatic performances, and competitive sports games unify each age group and create an enhanced sense of community. The camp's renowned Tikvah programs provide all the opportunities of the Ramah Wisconsin experience to young people with learning and social difficulties.



Camp Ramah in Wisconsin has had a profound and life-changing impact on generations of young Jews. Ramah alumni are guided in their daily lives and careers by the Jewish values and identity forged at camp. Throughout the decades, many alumni have become educated lay leaders, rabbis, cantors and teachers, inspired by a love of Judaism, Israel and the Jewish people nurtured at Camp Ramah.



Throughout its history, Ramah has counted on the generosity of alumni and friends to enhance its programs and facilities. Thanks to this ongoing support, the camp fee can be set at a moderate level and Ramah Wisconsin remains accessible to families throughout the Midwest. Ramah supporters have strengthened the camp through the annual and capital campaigns and through gifts to the Camp Ramah in Wisconsin Endowment. The Endowment, which totals over \$ 2 million, is professionally managed through the Jewish Federation of Metropolitan Chicago. Each year an allocation from the Endowment is used to support camp programming, facilities and scholarships.

Looking to the Future

The future financial health of Ramah Wisconsin is directly related to the strength of the Endowment. A strong Endowment will ensure that the highest quality programs and facilities are available to campers around the Midwest at a reasonable tuition level.

We now turn to Ramah Wisconsin alumni and friends to ask you to help perpetuate the camp experience. One critical step to accomplish this goal is to name Camp Ramah in Wisconsin in your estate plan. After your lifetime, your bequest or planned gift will become a part of the Ramah Wisconsin Endowment. Your gift will support the camp in perpetuity and forever identify you as a devoted supporter of the Ramah mission.

In recognition of your generosity, and with an eye to the future, we are establishing the Ramah Wisconsin Legacy Society. Legacy Society gifts will benefit Camp Ramah in Wisconsin by:

- providing ongoing support for excellent and innovative programming in music, art, drama, dance, sports and outdoor education
- providing funds for maintaining first rate camp facilities
- providing scholarship funds for families who need assistance in addition to synagogue support
- supporting leadership training on both the camper and staff level
- supporting Ramah Wisconsin's ongoing work as a research and development laboratory for fresh new ideas in informal Jewish education



The Legacy Society honors and recognizes donors who support Ramah Wisconsin through a bequest or planned gift by entering their names and testimonies in the Ramah Wisconsin Legacy Book. Donors will have the opportunity to make an entry in the Legacy Book, describing the role Ramah has played in their family. The Legacy Book will preserve a piece of camp history by documenting the personal impact of the Ramah experience as well as honoring the strong community support that has made the camp the outstanding institution it is today.

**You are a part of Ramah's history
and we celebrate your involvement!**

**Please join our efforts as we build for the future
by completing a Declaration of Intent and
returning it to the Ramah office.**

Todah Rabbah!

**Camp Ramah in Wisconsin
65 E. Wacker Place, Suite 1200
Chicago IL 60601**

www.ramahwisconsin.com

Please consider adding or adapting one of the following provisions to your will or trust:

I give \$ _____ (or specified property) to Camp Ramah in Wisconsin as an unrestricted gift.

I give _____ % from the residue of my estate to Camp Ramah in Wisconsin as an unrestricted gift.

For additional information contact Linda Hoffenberg, Development Director,
at 312.606.9316 ext. 225 or LHoffenberg@ramahwisconsin.com

Please consult your attorney or tax advisor for professional guidance in this area.